



海洋無極號 Ultramarine

首航 2021 總噸位 13,500 噸 載客 Guests 199 人 船員 Crew 140 人 甲板 Decks 7 層

BEST OF HIGH ARCTIC NORWAY 北極之旅

HELLSINKI - HELLSINKI

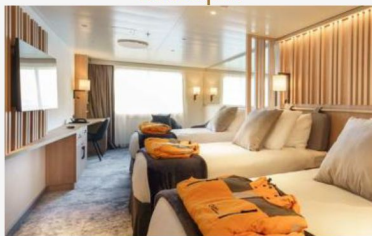
赫爾辛基 - 赫爾辛基

啟航：2025 年 5-6 月

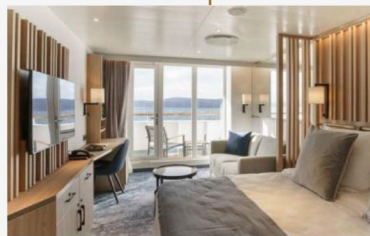
Day	Port
1	赫爾辛基·芬蘭 入住一晚郵輪公司安排之酒店 Helsinki, Finland One night hotel accommodation arranged by Quark Expeditions
2	乘坐郵輪公司安排之接送前往機場·乘搭航班前往挪威隆雅·並送往港口登船 Transfer to airport for flight arranged by Quark Expeditions to Longyearbyen, Norway and transfer to port for embarkation
3-9	探索斯匹次卑爾根島·船長及專家將按實際情況訂航線及登陸安排·您將有機會乘坐橡皮艇登岸觀賞動物生態及自然景色·部份有機會到訪的景點包括 14th of July 冰川·斯密倫堡·阿爾克菲耶萊特和欣洛彭峽·並且會選擇觀賞野生動物的最佳地點·同時欣賞斯匹次卑爾根島的歷史和地質。 Cruising around Spitsbergen, your captain and expedition team will decide the itinerary and landing arrangements. You will have the chance to land by zodiacs and appreciate the scenery and observe wildlife. Some of the places we may visit include the 14th of July Glacier, Smeerenburg, Alkefjellet and the Hinlopen Strait. The destinations visited will be selected for optimum wildlife viewing with an appreciation of the history and geology of Spitsbergen.
10	離船·乘坐郵輪公司安排之接送前往機場·乘搭航班前往赫爾辛基 Longyearbyen, disembark and transfer to return flight to Helsinki arranged by Quark Expeditions



Explorer Triple 285 sq. ft



Balcony Suite 226 sq. ft



Terrace Suite 350 sq. ft



啟航日期 Departure Dates

11, 24 May 2025
01 Jun 2025

HK\$61,899+

HK\$86,799+

HK\$104,799+

09, 17 Jun 2025

HK\$64,599+

HK\$91,099+

HK\$111,899+

Misc. Charge and port tax 郵輪雜費及港口稅: Included 已包括於船費內

Onboard Gratuities 船員小費: 建議每人每晚 USD 15-20 per guest per night suggested [Paid onboard 船上繳付]

以每位成人佔半房 HKD 計算 Prices are per person on double occupancy, quoted in HKD

費用包括：

- 郵輪雜費、港口稅
- 8 晚郵輪住宿並享用船上美食及娛樂設施
- 郵輪公司安排來回赫爾辛基至隆雅 經濟客位機票
- 郵輪公司安排登船前 1 晚指定隆雅酒店住宿
- 晚餐及酒吧開放時段指定酒精飲品
- 郵輪公司禦寒外套乙件

費用不包括 (如適用)

- 需付費岸上觀光、食品及飲品、郵輪燃油附加費、船上指定保險費、護照簽發 / 簽證費用、旅遊保險、其他個人消費
1. 費用以 HK\$ 二人一房每位計算。單人房、三/四人同房或兒童之費用，敬請查詢
 2. 費用價格只作參考，價格視乎實際供應情況並繳付訂金時為準
 3. 郵輪上各項收費均以美元結算
 4. 訂位均以先到先得為準。訂位確認後，需於 3 個工作天內繳付不可退還之指定金額訂金(或全額費用)，餘下費用必須於載運機構訂下的繳款限期前或當天繳付(以較早之日期計算)
 5. 全數繳付後，將不獲任何退款，在任何情況下都不能更改，轉讓或退還款項
 6. 以上費用及條款如有任何更改，恕不另行通知
 7. 如載運機構調整附加費或其他應繳稅費，乘客須繳付差額。實際金額以載運機構告示發出日期為準
 8. 郵輪上各收費項目費用如有任何更改，恕不另行通知
 9. 客人需持有回港日期起計不少於 6 個月以上有效護照及一次或多次(如適用)之到訪國家入境簽證，本公司對客人因個人證件或簽證所產生之任何問題概不負責
 10. 訂位時的乘客姓名全寫必須與旅遊證件上的全名相同，任何修改將會導致失去原來之訂位，失去原來之優惠價及導致修改費用
 11. 艙房號碼、層數及位置將於辦理登船手續時由郵輪公司派發，並以郵輪公司之最後安排為準。郵輪公司亦可在不收取額外費用下提升艙房至較高級別，客人不得異議
 12. 若因天氣惡劣、海面狀況或各種未能預知或「迫不得已理由」(指戰爭、政治動盪、恐怖襲擊、天災、疫症、惡劣天氣、交通工具發生技術問題、載運機構臨時更改班次/時間表、罷工、工業行動、旅遊目的地政府/世界衛生組織發出旅遊警告、香港特區政府發出旅遊紅色/黑色外遊警示，以及其他業界不能控制的不利旅客外遊的情況)而不能停靠或更改行程，顧客同意及接受本公司或郵輪公司均不會作出任何補償，顧客不得異議
 13. 航程中港口啟航/抵達/停靠時間會按航行情況有所調整/更改/取消，一切以郵輪公司最後安排為準。顧客同意及接受郵輪公司有最終的決定及不會當作違反商品說明條例，亦就此放棄向郵輪公司或本公司追討或索償
 14. 船票以郵輪公司所頒布的航程合同所發出。有關條款及細則均以刊登之條款為準 <http://www.quarkexpeditions.com/>
 15. 「香港旅遊業監管局」(TIA)建議客人出發前購買郵輪保險或旅遊綜合保險
 16. 以上費用及條款如有任何更改，恕不另行通知。其他條款按本公司之“訂購條款與責任細則”為準，詳情請與本公司職員查詢
 17. 本公司及郵輪公司保留權利隨時更改以上費用、條款及細則。若有任何異議，本公司及郵輪公司保留一切最終決定權

Includes:

- NCCF, Government Fees
- 8 nights cruise on board including accommodation, meals, entertainment & access to facilities
- Roundtrip economy class air ticket between Helsinki and Longyearbyen arranged by Quark Expeditions
- 1 night pre cruise hotel in Longyearbyen arranged by Quark Expeditions
- Free beer, standard wines, spirits, and cocktails during bar service hours and dinner
- An official Quark Expeditions® parka

Fare Exclusion (If applicable)

- Shore Excursions, Priced Food & Beverage items, Gratuities, Cruise Fuel Surcharges, Cruise Insurance Premium, Passport / Travel Visa Fees, Travel Insurance, Any Personal Expenses
1. Fares quoted are per person in HK\$ based on double occupancy.
 2. Fares listed on the flyer are for reference only, fares are subject to availability and to be confirmed at the time of a paid reservation.
 3. Shipboard currency: US\$.
 4. Reservation is on first come-first serve basis. A non-refundable deposit with indicated amount (or full payment) is required within 3 working days upon confirmation. Balance payment must be received on / before the deadline set by the carrier (whichever earlier).
 5. Refund for cancellation after full payment will not be entertained. Cruise Fare is non-endorseable, non-reroutable and non-refundable.
 6. All prices, fees and taxes are subject to change without prior notice.
 7. Rights are reserves to collect fuel supplements, applicable taxes which imposed by the carrier, even for a full paid reservation. Exact amount will be determined on the date of notification received from the carrier.
 8. The price for chargeable or priced items onboard are subject to change without prior notice.
 9. Passengers must have passport with at least 6 months validity on the date of return, and valid visa(s) for visiting the port of call listed in the itinerary. Cruise Company and her booking agencies and representatives will not be liable for any consequences due to visa or passport issues.
 10. Passengers' full name as shown on travel document is required at the time of booking. Amendment will likely result in fare difference, loss of reservation and / or incurring amendment fees.
 11. Stateroom assignment is at cruise line's discretion, and on best available basis. Cruise line reserves the rights offering higher category accommodations at no additional cost.
 12. Passengers accept full responsibility for all losses and expenses due to "Reasons beyond control". Cruise line and the travel agency will not be liable for any consequences. ("Reasons beyond control" means hostilities, political unrest, natural disasters, pestilences, bad weather, technical problems to transport, changes to the frequency or timetable of any means of conveyance by its operator without advance notice, strikes, industrial action, etc.)
 13. Cruise line reserves the rights to make changes on itinerary, timing on all embarkations/disembarkations, and port(s) call cancellation due to weather condition or specific reasons. All of the changes will not be considered as against "The Trade Descriptions Ordinance, Chapter 362, Laws of Hong Kong". Passengers shall not make claim against the cruise line or/and the travel agency for any compensation.
 14. Cruise ticket issuance is subject to the terms and conditions as stated on the passage contract, thus the terms and condition laid on: <http://www.quarkexpeditions.com/>
 15. HK Travel Industry Authority recommends passenger to take out the travel insurance before the journey.
 16. The above Terms and Conditions are subject to change without prior notice. Travel agency reserves the rights to alter the terms & conditions and make final decision in case of any disputes.
 17. Cruise line and travel agency reserve the right to amend the terms and conditions without prior notice. In case of disputes, Cruise Company and travel agency reserve the right to make the final decision.