



和平船 122 回 地球一周航程

107 日南半球熱情嘉年華之旅

107 Days Carnival Splendor & Natural Wonders

15 Dec 2025 – 31 Mar 2026

PEACE BOAT

Since 1983



Pacific World 太平洋世界號

GRT 總噸位 – 77,441

Passenger 載客量 – 2,419

Refurbished 翻新 – 2021

Deck 甲板 – 15

2024 年 4 月 30 日前報名

Full Payment Offer

全數付款尊享優惠價

每位 **HK\$96,000** 起

(原價 Original price: HK\$176,000)

航程簡介 Itinerary Highlight

107 天航程將帶你探索南半球的奧秘。遊歷南美、非洲各國的旅遊景點，體驗各地文化及歷史故事，於船上旅程踏入精彩的 2026 年，在沉醉美景之間跨越舊歲，為你於旅程中展開美好一年。

航程另一精彩重點，將帶您前往巴西里約熱內盧，參與一年一度森巴嘉年華，體驗現場熱鬧氣氛！此外，更會到訪夏威夷三個島嶼，讓你感受當地獨特小島風情。



重點港口及體驗 Featured Destinations & Experience



復活節島

被蔚藍海水包圍的復活節島，島上有著約 900 座的摩艾石像，其魅力讓旅人們持續造訪。看見保留歷史的摩艾石像之外，更將探索復活節島的神秘謎題。



馬丘比丘

歷史上王朝的反覆興衰，使秘魯擁有多項世界遺產。當中舉世聞名的馬丘比丘遺跡，更能見證印加文明傑出的石雕工藝。一起目睹巨石遺跡與自然結合的風景！



馬達加斯加

麵包樹大道是島上絕景。據傳麵包樹的樹齡達到數千年，獨特姿態吸引眾多遊客前來。觀賞島上獨特演化的動植物更是旅遊樂趣之一。

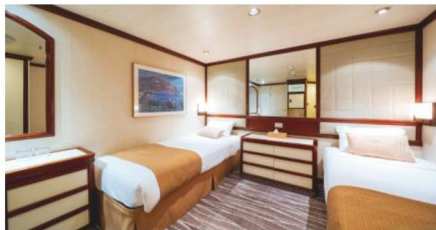


太平洋世界號 2025 年 12 月航次 Pacific World – December 2025 Itinerary

Date 日期	Ports Of Call 港口	Date 日期	Ports Of Call 港口
15 Dec	Yokohama, Japan 橫濱, 日本	09 Feb	Buenos Aires, Argentina 布宜諾斯艾利斯, 阿根廷
24-25 Dec	Honolulu – Oahu, Hawaii 檀香山 – 歐胡島, 夏威夷	10 Feb	Montevideo, Uruguay 蒙得維的亞, 烏拉圭
26 Dec	Kahului – Maui, Hawaii 卡胡魯伊 – 茂宜島, 夏威夷	13-14 Feb	Santos, Brazil 桑托斯, 巴西
27 Dec	Kailua-Kona – Hawaii, Hawaii 凱魯瓦 – 夏威夷島, 夏威夷	15-17 Feb	Rio de Janeiro, Brazil 里約熱內盧, 巴西 一年一度巴西嘉年華會
2026 03 Jan	Papeete, Tahiti 帕皮堤, 大溪地	26 Feb	Walvis Bay, Namibia 鯨灣港, 納米比亞
11 Jan	Easter Island, Chile 復活節島, 智利**	01 Mar	Cape Town, South Africa 開普敦, 南非
19-22 Jan	Callao, Peru 卡亞俄, 秘魯	03-04 Mar	Port Elizabeth, South Africa 伊莉莎白港, 南非
26 Jan	Valparaiso, Chile 瓦爾帕萊索, 智利	08-09 Mar	Ehoala, Madagascar 艾奧拉, 馬達加斯加
Sailing through Patagonia Fjord 巴塔哥尼亞峽灣遊覽航行			
31 Jan-01 Feb	Punta Arenas, Chile 蓬塔阿雷納斯, 智利	11 Mar	Reunion Island, French Territory 法屬留尼旺島
03 Feb	Ushuaia, Argentina 烏斯懷亞, 阿根廷	12 Mar	Port Louis, Mauritius 路易港, 毛里求斯
06 Feb	Puerto Madryn, Argentina 馬德林港, 阿根廷	21 Mar	Singapore 新加坡
		27 Mar	Keelung, Taiwan 基隆, 台灣
		30 Mar	Kobe, Japan 神戶, 日本 (技術性停泊·不設登岸觀光)
		31 Mar	Yokohama, Japan 橫濱, 日本

** Tender Required 需轉乘駁船登岸

艙房介紹 Cabins Introduction



內艙房 Inside Cabin /

同行共享內艙 Semi-Single Inside (w curtain)

Size 面積：13 m²

Deck 樓層：8-12

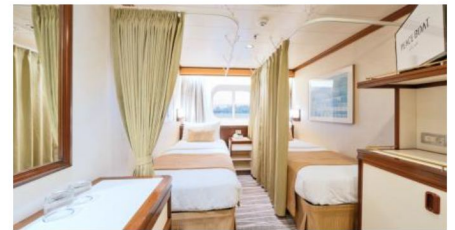


海景艙房 Outside cabin

Size 面積：14 m² (II - Plus II) / 16 m² (Plus I)

Deck 樓層：5-6 (II), 8 (I),

8 (Plus II), 9-11 (Plus I)



同行共享海景艙房

Semi-Single Outside (w curtain)

Size 面積：14 m²

Deck 樓層：5-6 (II), 8 (I)



露台艙房 Balcony Cabin

Size 面積：17 m² Including Balcony 連露台

Deck 樓層：9 (II), 10-12 (I)



迷你套房 Junior Suite

Size 面積：33 m² Including Balcony 連露台

Deck 樓層：10



Premium Suite 豪華套房

Size 面積：48 m² Including Balcony 連露台

Deck 樓層：9-10

價目表 (以港幣計算) Price Table (in HKD)

以下價格為折扣後，以港幣每位計算 | *價目以最終確認為準，如有任何更改，恕不另行通知

艙房級別 Cabin Type	Pair 雙人房			Semi-Single 同行共享艙			Single 單人房		
	代號	原價	尊享優惠 (需繳全數費用)	代號	原價	尊享優惠 (需繳全數費用)	代號	原價	尊享優惠 (需繳全數費用)
內艙房 Inside	G	\$176,000	\$96,000	G2	\$183,600	\$135,700	M	\$316,700	\$155,300
海景房 Outside II	F	\$191,400	\$142,000	F2	\$199,100	\$149,800	L	\$344,500	\$237,800
海景房 Outside I	E	\$199,100	\$143,500	E2	\$206,900	\$151,400	K	\$358,400	\$241,700
高級海景房 Outside Plus II	D2	\$208,400	\$147,500		-	-			
高級海景房 Outside Plus I	D1	\$246,000	\$151,400		-	-			單人乘客如入住雙人房， 須繳付雙人房每位費用之 200%
露台房 Balcony II	C2	\$254,700	\$157,700		-	-	J	\$458,300	\$267,700
露台房 Balcony I	C1	\$270,000	\$167,000		-	-	I	\$486,000	\$277,000
迷你套房 Junior Suite	B	\$447,500	\$332,000		-	-			單人乘客如入住雙人房， 須繳付雙人房每位費用之 200%
豪華套房 Premium Suite	A3	\$524,700	\$402,800		-	-			單人乘客如入住雙人房， 須繳付雙人房每位費用之 200%

港務費 Port Charge: \$4,500 | 預繳服務小費 Prepaid Gratuities: \$9,630 | International Tourist Tax 日本旅客稅: \$70

郵輪燃油附加費 Cruise Fuel Surcharge: 全數付款: 免收 / 早鳥: 金額將於繳付尾數時確定)

同行共享艙 Semi-Single - 由船公司安排同性別乘客，入住二人艙房並共享設備 (只適用於內艙房及海景房)

Peace Boat 官方合作伙伴及相關企劃



費用包括

- ◆ 郵輪住宿並享用船上膳食及娛樂設施
- ◆ 岸上觀光遊一項價值高達 15,000 日元
- ◆ 旅遊業議會 0.15%印花稅

費用不包括 (如適用)

- ◆ 各地機場離境稅、航空燃油附加費、香港機場保安稅、機場建設費、季節性附加費、旅行社服務費、港務費、港口稅、岸上觀光、需付費食品及飲品、船員小費、郵輪燃油附加費、船上指定保險費、護照簽發 / 簽證費用、旅遊保險、其他個人消費

條款及細則

1. 費用以港元每位計算。
2. 費用按 [2024年2月29日](#) 之價格作參考指引，價格視乎供應情況並繳付訂金時為準
3. 郵輪上各項收費均以 **日元** 結算
4. 客人須於出發前領取電子船票
5. 訂位均以先到先得為準。訂位確認後，需於限期內繳付全數費用
6. 如載運機構調整附加費或其他應繳稅費，乘客須繳付差額。實際金額以載運機構告示發出日期為準
7. 郵輪上各收費項目費用如有任何更改，恕不另行通知
8. 客人需持有回港日期起計不少於 6 個月以上有效護照及一次或多次(如適用)之到訪國家入境簽證，本公司對客人因個人證件或簽證所產生之任何問題概不負責
9. 訂位時的乘客姓名全寫必須與旅遊證件上的全名相同，任何修改將會導致失去原來之訂位，失去原來之優惠及導致修改費用
10. 艙房號碼、層數及位置將於辦理登船手續時由郵輪公司派發，並以郵輪公司之最後安排為準。郵輪公司亦可在不收取額外費用下提升艙房至較高級別，客人不得異議
11. 若因天氣惡劣、海面狀況或各種未能預知或「迫不得已理由」(如戰爭、政治動盪、恐怖襲擊、天災、疫症、惡劣天氣、交通工具發生技術問題、載運機構臨時更改班次/時間表、罷工、工業行動、旅遊目的地政府/世界衛生組織發出旅遊警告、香港特區政府發出旅遊紅色/黑色外遊警告，以及其他業界不能控制的不利旅客外遊的情況)而不能停靠或更改行程，顧客同意及接受本公司或郵輪公司均不會作出任何補償，顧客不得異議
12. 航程中港口啟航/抵達/停靠時間會按航行情況有所調整/更改/取消，一切以郵輪公司最後安排為準。顧客同意及接受郵輪公司有最終的決定及不會當作違反商品說明條例，亦就此放棄向郵輪公司或本公司追討或索償
13. 船票以郵輪公司所頒布的航程合同所發出。有關條款及細則均以刊登之條款為準 www.PBCruise.com.HK
14. 「香港旅遊業議會」(TTC)建議客人出發前購買郵輪保險或旅遊綜合保險
15. 以上費用及條款如有任何更改，恕不另行通知。其他條款按本公司之「訂購條款與責任細則」為準，詳情請與本公司職員查詢
16. 本公司及郵輪公司保留權利隨時更改以上費用、條款及細則。若有任何異議，本公司及郵輪公司保留一切最終決定權

Inclusion

- ◆ Cruise on board including accommodation, meals, entertainment & access to facilities
- ◆ One shore excursion valued up to JPY15,000
- ◆ TTC 0.15 % Levy

Exclusion (If applicable)

- ◆ Airport Taxes, Fuel Surcharges, HKIA Security Surcharge, Airport Construction Fee, Seasonal Surcharge, Travel Agent Service Fee, Port Charges, Government Fees, Shore Excursions, Priced Food & Beverage items, Gratuities, Cruise Fuel Surcharges, Cruise Insurance Premium, Passport / Travel Visa Fees, Travel Insurance, Any Personal Expenses.

Terms & Conditions

1. Fares quoted are per person in Hong Kong Dollars.
2. Fares listed on the flyer are based on quotation as of [29 Feb 2024](#), it is subject to availability and to be confirmed at the time of a paid reservation.
3. Shipboard currency: **JPY**.
4. Passengers must collect the e-cruise ticket before departure.
5. Reservation is on first come-first serve basis. Full payment is required within a specific deadline upon confirmation.
6. Rights are reserves to collect fuel supplements, applicable taxes which imposed by the carrier, even for a full paid reservation. Exact amount will be determined on the date of notification received from the carrier.
7. The price for chargeable or priced items onboard is subject to change without prior notice.
8. Passengers must have passport with at least 6 months validity on the date of return and valid visa(s) for visiting the port of call listed in the itinerary. Cruise Company and her booking agencies and representatives will not be liable for any consequences due to visa or passport issues.
9. Passengers' full name as shown on travel document is required at the time of booking. Amendment will likely result in fare difference, loss of reservation and / or incurring amendment fees.
10. Stateroom assignment is at cruise line's discretion, and on best available basis. Cruise line reserves the rights offering higher category accommodations at no additional cost.
11. Passengers accept full responsibility for all losses and expenses due to "Reasons beyond control". Cruise line and the travel agency will not be liable for any consequences. ("Reasons beyond control" means hostilities, political unrest, natural disasters, pestilences, bad weather, technical problems to transport, changes to the frequency or timetable of any means of conveyance by its operator without advance notice, strikes, industrial action, etc.)
12. Cruise line reserves the rights to make changes on itinerary, timing on all embarkations/disembarkations, and port(s) call cancellation due to weather condition or specific reasons. All of the changes will not be considered as against "The Trade Descriptions Ordinance, Chapter 362, Laws of Hong Kong". Passengers shall not make claims against the cruise line or/and the travel agency for any compensation.
13. Cruise ticket issuance is subject to the terms and conditions as stated on the passage contract, thus the terms and condition laid on: www.PBCruise.com.HK
14. HK Travel Industry Council recommends passenger to take out the travel insurance before the journey.
15. The above Terms and Conditions are subject to change without prior notice. Travel agency reserves the rights to alter the terms & conditions and make final decision in case of any disputes.
16. Cruise line and travel agency reserve the right to amend the terms and conditions without prior notice. In case of disputes, Cruise Company and travel agency reserve the right to make the final decision.

Cancellation Policy 取消訂位條款

Days Prior to Sailing Date 啟航日期前取消訂位

181 Days or before 181 日或之前
180 – 91 Days 180 – 91 日
90 – 61 Days 90 – 61 日
60 – 31 Days 60 – 31 日
30 – 1 Days 30 – 1 日
0 Days 0 日 / NO SHOW 未有登船

Charges 取消訂位費用

HK\$1,000 per person / transaction 位 / 交易
5% of Total Charge 全額費用之百分之五
30% of Total Charges 全額費用之百分之三十
50% of Total Charges 全額費用之百分之五十
70% of Total Charges 全額費用之百分之七十
Total Charges 全額費用

如客人因郵輪公司以「迫不得已理由」取消行程而取消訂位，本公司將收取 HK\$1000(每位)行政費

HK\$1000 per person admin fee will be applied if booking cancelled as cruise company cancel the itinerary due to "Reasons beyond control"

PHOTO : PEACEBOAT, Kajjura Takashi, Kataoka Kazushi, Mizumoto Shunya, Suzuki Shoichi [Fotolia]Alexi TAUZIN, Delphotostock, Patryk Kosmider, Scanrail, Sergii Figurnyi