

14 晚 – 春遊日本櫻花季節之旅

14 Nights – Kobe to Osaka



銀海女神號 Silver Muse

SILVERSEA®



京都, 日本 Kyoto, Japan



Silver Muse 銀海女神號

| | |
|----------------------|---------------|
| 總噸位 Gross Tonnage | 40,700 噸 tons |
| 首航年份 Inaugural | 2017 |
| 載客 Passenger | 596 人 |
| 船員 Crew | 417 人 |
| 甲板 Decks | 8 層 |

船上特色:

- 船上專業管家服務
- 全船均設有 WIFI 無線上網服務
- 免收船上服務人員小費
- 指定岸上觀光行程
- 船上飲品不另收費 (包括特選酒精類飲品、香檳及烈酒)
- 24 小時提供免費送餐服務, 更可選取並享用主餐廳餐牌之菜式
- 船員和乘客的比例近乎 1 比 1 的個人化服務
- 提供接駁大部分港口至城市的穿梭巴士服務

啟航日期: 2023 年 4 月 12 日

2023 年 2 月 28 日前報名: HK\$ 65,298 起

| 日程 | 停泊港口 | 預計到達 | 預計離開 |
|------|---|------|------|
| 12/4 | 神戶, 日本 – 登船 Kobe, Japan – Embarkation | -- | 2300 |
| 13/4 | 海上航行 At Sea | -- | -- |
| 14/4 | 鹿兒島, 日本 Kagoshima, Japan | 0800 | 1800 |
| 15/4 | 長崎, 日本 Nagasaki, Japan | 0800 | 1800 |
| 16/4 | 釜山, 南韓 Busan, South Korea | 0800 | 2330 |
| 17/4 | 海上航行 At Sea | -- | -- |
| 18/4 | 金澤, 日本 Kanazawa, Japan | 0800 | 1900 |
| 19/4 | 新潟, 日本 Niigata, Japan | 0800 | 2300 |
| 20/4 | 酒田, 日本 Sakata, Japan | 0800 | 1800 |
| 21/4 | 函館, 日本 Hakodate, Japan | 0800 | 2300 |
| 22/4 | 青森, 日本 Aomori, Japan | 0800 | 1800 |
| 23/4 | 海上航行 At Sea | -- | -- |
| 24/4 | 橫濱 (東京), 日本 Yokohama (Tokyo), Japan | 0800 | 2359 |
| 25/4 | 海上航行 At Sea | -- | -- |
| 26/4 | 大阪, 日本 – 離船 Osaka, Japan – Disembarkation | 0700 | -- |



價目 Price

成人佔半房 Sharing twin basis

海景套房

Vista Suite – Cat. VI

全景套房

Panorama Suite – Cat. PA

豪華露台套房

Deluxe Veranda Suite – Cat. DX

4 月 12 日

HK\$ 65,298 起

HK\$ 72,398 起

HK\$ 88,198 起

郵輪雜費 HK\$ 4,650 | 以上優惠只適用於每艙房首 2 位客人。船公司將保留以上優惠之最終決定權。 | 以上航程及預計到達/離開時間只供參考, 如有更改, 恕不另行通知。

* 花季屬自然現象, 須視乎實際之氣候或天氣而定。如屆時因氣候或天氣關係未能觀賞花季, 本公司概不負責。

14 晚 – 春遊日本櫻花季節之旅

14 Nights – Kobe to Osaka

銀海女神號 Silver Muse



SILVERSEA®



銀海郵輪一直推行奢華、頂級路線，船上絕大多數的艙房均設有浴缸、陽台的豪華套房，船上船員和乘客的比例近乎 1 比 1，並配有專屬管家(Butler)服務為旅客打理各類事項。以小型豪華郵輪設計，帶你穿梭一般無法容納巨型郵輪的港口。為追求自由無束縛的旅遊氣氛，銀海遊輪公司推出一價全包的 concept，將旅客會遇到的瑣碎事減低至最少。



Indochine

優雅精緻的亞洲風味菜餚，在一間餐廳中，品嚐東南亞的各種風味。



Atlantide

提供時令新鮮食材，你可享用到各類海鮮或牛扒。



La Dame *

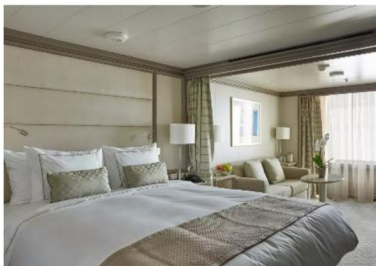
提供法式餐膳體驗，享用葡萄酒配以六道特制的法屬風味菜餚。



Kaiseki *

懷石料理在於其精心的準備和呈現。日間和晚上提供不同菜餚。

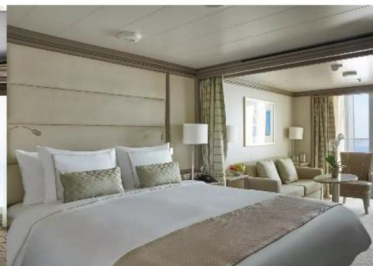
* 收費餐廳，需要提前預定



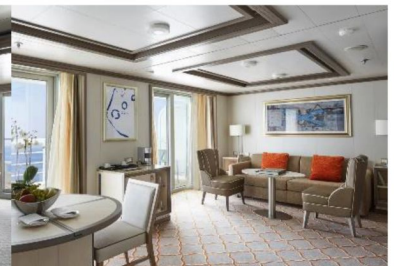
海景套房
Vista Suite - Cat. VI
Size : 32 sq.m.



全景套房
Panorama Suite – Cat. PA
Size : 31 sq.m.



豪華露台套房
Deluxe Veranda Suite – Cat. DX
Size : 36 sq.m. including veranda



銀海套房
Silver Suite – Cat. SL
Size : 73 sq.m. including veranda

14 晚 – 春遊日本櫻花季節之旅

14 Nights – Kobe to Osaka

銀海女神號 Silver Muse



SILVERSEA®

費用包括

- 14 晚遊輪團體艙房住宿並享用船上美食及娛樂設施
- 船上服務人員小費
- 船上 WIFI 無線上網服務
- 船上管家服務
- 每天指定岸上觀光行程
- 旅遊業議會 0.15%印花稅

費用不包括:

- 郵輪雜費、港口稅、季節性附加費、旅行社服務費
- 需付費岸上觀光、需付費食品及飲品、遊輪燃油附加費(如適用)、船上指定保險費(如適用)
- 護照簽發 / 簽證費用、旅遊保險、其他個人消費
- 其他不列於此列之需收費項目

備註

1. 以上價格只適用於 2023 年 2 月 28 日前報名及繳付不退還之全費。
2. 費用以成人二人一房每位計算，並以港幣計算。單人房、三/四人同房或兒童之費用，請與本公司聯絡。
3. 費用按 2022 年 12 月 13 日之價格作參考指引，價格視乎供應情況並繳付訂金時為準。
4. 如航空公司或遊輪公司增收燃油附加費、其他應繳稅費，乘客須繳付差額。實際金額以船公司公告發出日期為準。有關金額將於確認後釐定並加到最終的票價。
5. 訂位時需繳付不退還之訂金。餘款必須於訂位確認後 3 個工作日內全數繳付。繳交費用後，恕不可作任何改動。任何姓名或出發日子之改動，將會視作取消行程處理。套票必須於出發前最少 5 個工作日前預訂。
6. 訂位時的乘客姓名全寫必須與旅遊證件上的全名相同，任何修改將會導致失去原來之訂位，失去原來之優惠價及導致修改費用。
7. 套票在任何情況下都不能更改、轉讓或退還款項。
8. 機票及船票可於出發前 3 日內領取。
9. 出發後因迫不得已之理由(如戰爭、政治動盪、天災、疫症、惡劣天氣、交通工具發生技術問題、載運機構臨時更改班次或時間表、罷工和工業行動等)更改項目而增加經營成本，本公司可向顧客徵收額外費用。
10. 如因天氣惡劣、海面狀況或各種未能預知或迫不得已的情況下(如戰爭、政治動盪、天災、疫症、惡劣天氣、交通工具發生技術問題、載運機構臨時更改班次或時間表、罷工和工業行動等)而不能停駛或更改行程，顧客同意及接受船公司或「本公司」不需作出任何補償。
11. 航程中港口啟航/抵達/停靠時間會按航行情況有所調整/更改/取消，以遊輪公司最後安排為準，顧客同意及接受遊輪公司有最終的決定及不會當作違反商品說明條例，亦就此放棄向遊輪公司或「本公司」追討或索償。
12. 乘客需持有回港日期起計不少於 6 個月以上有效護照及入境簽證，本公司對乘客因個人證件所產生之任何問題概不負責。
13. 「香港旅遊業議會」(TIC)建議乘客出發前購買綜合旅遊保險。
14. 以上費用及條款如有任何更改，恕不另行通知。其他條款按本公司「責任及細則」為準，詳情請與本公司職員查詢或瀏覽本公司網頁。
15. 以上優惠及價錢只適用於 2022 年 12 月 13 日或以後報名之新客戶。
16. 船公司將保留以上優惠之最終決定權。

遊輪備註

1. 客人報名時請提供有效旅遊證件之副本。
2. 遊輪上各項收費，均以美元結算，敬請注意。
3. 艙房號碼、層數及位置將於辦理登船手續時由遊輪公司派發，並以遊輪公司之最後安排為準。
4. 遊輪公司亦可在不收取額外費用下提升艙房至較高級別，客人不得異議。
5. 取消行程將按照遊輪公司罰則另將收取行政費用每位每交易計港幣\$500
6. 其他有關遊輪公司之條款及細則，均以遊輪公司英文行程書內之條款及網上刊登之條款為準，請瀏覽網頁 www.silversea.com
7. 本公司及遊輪公司保留權利隨時更改以上條款及細則，若有任何異議，本公司及遊輪公司保留一切最終決定權。
8. 尚有其他艙房及套房級別，詳情請與本公司職員聯絡。

Fares includes:

- 14 nights cruise onboard including accommodation (Group allotment), meals, entertainment & access to facilities.
- Gratuities onboard
- Wifi service onboard
- Butler service onboard
- Included Shore Excursions (One per port and per day)
- TIC 0.15 % Levy.

Fares EXCLUDED:

- NCCF, Government Fees, Seasonal Surcharge, Travel Agent Service Fee
- Priced Shore Excursions, Priced Food & Beverage items, Cruise Fuel Surcharges (if applicable), Cruise Insurance Premium (if applicable)
- Passport / Travel Visa Fees, Travel Insurance, Any Personal Expenses
- Including, but not limited to, any information relating to policy of Cruise Company.

General Terms & Conditions :

1. Prices are only valid for guests who book and pay in full (non-refundable payment) by 28 Feb, 2023
2. Fares quoted are per person in Hong Kong Dollars based on double occupancy. Single/Triple/Quad or Child fare is available on request basis.
3. Fares listed on the flyer are based on quotation as of 13 Dec, 22, it is subject to availability and to be confirmed at the time of a paid reservation.
4. Travel agent reserves the right to collect fuel supplements, applicable taxes which imposed by the carrier, even full payment has been made to the reservation. Fare difference is governed by official notification from cruise line. These amounts will be determined upon your confirmation of booking and will be added to the final fare.
5. Non-refundable deposit is required upon confirmation to secure a booking. Full payment must be made within 3 days after confirmation. No change is allowed once payment is made, amendment on names or dates will consider as cancellation. Reservation must be made not less than 5 days before departure.
6. Passengers' full name as shown on travel document is required at the time of booking. Amendment will likely result in fare difference, loss of reservation and / or incurring amendment fees.
7. Package is non-endorable, non-reroutable and non-refundable.
8. Flight and Cruise documents can be received in 3 days before departure.
9. If a material alteration to a package tour after its commencement for reasons beyond control, the travel agency may impose any additional charge to his clients as a result of an increase in operation costs. ("Reasons beyond control" means hostilities, political unrest, natural disasters, pestilences, bad weather, technical problems to transport, changes to the frequency or timetable of any means of conveyance by its operator without advance notice, strikes, industrial action, etc.)
10. Passengers accept full responsibility for all losses and expenses due to "Reasons beyond control". Cruise company and the travel agency will not be liable for any consequences. ("Reasons beyond control" means hostilities, political unrest, natural disasters, pestilences, bad weather, technical problems to transport, changes to the frequency or timetable of any means of conveyance by its operator without advance notice, strikes, industrial action, etc.)
11. Cruise company reserves the right to change itinerary, timing of all embarkations/disembarkations, and cancel port of calls due to weather conditions or specific reasons. All of the changes will not be considered as against "The Trade Descriptions Ordinance, Chapter 362, Laws of Hong Kong". Passengers shall not make claim against cruise company and the travel agency for any recovery.
12. Passengers' passport validity is required to have at least 6 months prior the return date and valid traveling visa(s) is granted. Travel agency will not be liable for any consequences.
13. HK Travel Industry Council recommends passenger to take out the travel insurance before the journey.
14. The above Terms and Conditions are subject to change without prior notice. Travel agency reserves the rights to alter the terms & conditions and make final decision in case of any disputes.
15. The above fares and promotions are only valid to the reservation that made on or after 13 Dec 22.
16. In case of disputes, Cruise Company reserves the right to make the final decision.

Cruise Terms & Conditions :

1. Passport copies are required for reservation.
2. Shipboard currency: US Dollars.
3. Stateroom assignment is subject to the cruise company, and on best available basis.
4. Cruise Company reserves the right to upgrade a guest or guests to higher category accommodations at no additional cost.
5. Cancellation fee of HK\$500 per person/transaction will be levied on top of cruise line's policy.
6. Other terms and conditions remain the same as laid on www.silversea.com
7. Fares and availability for single room, triple/quadruple or child share may available on request basis.
8. Fares of other categories available upon request.