

福岡「精選酒店」3天2夜套票

HKexpress

Canal City Washington Hotel

位於福岡運河城內

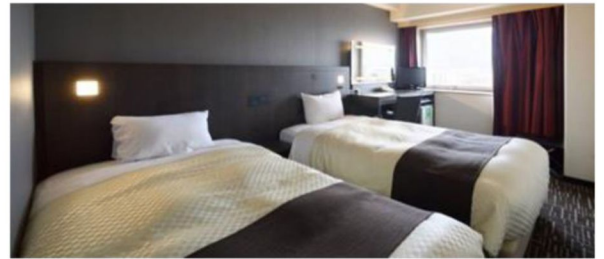
博多 <https://fukuoka.washington-hotels.jp/tw>

交通方法: JR博多站博多出口步行約10分鐘

Semi-Double 成人佔半房 每位 **\$3990+**
Room Size: 151.7ft² / Bed Type: 1 Semi Double
續住每晚: HK\$800+

Modern Twin 成人佔半房 每位 **\$4070+**
Room Size: 204.5ft² / Bed Type: 2 Single bed
續住每晚: HK\$890+

酒店坐落於大型購物中心「福岡運河城」裡面，博多運河城是集購物中心、電影院、劇場、辦公區為一體的複合型商業設施。距離中洲川端商店街和中洲屋台也很近，不論是逛街購物還是品嚐美食也超方便！



the b Fukuoka Tenjin

天神區CP值之選

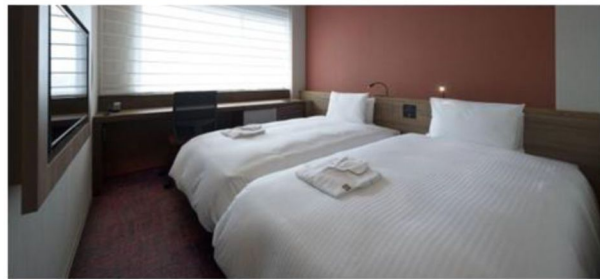
天神區 www.ishinhotels.com/zh-TW/theb/fukuoka-tenjin/

交通方法: 地鐵七隈線天神南站5號出口步行約1分鐘

Double 成人佔半房 每位 **\$4260+**
Room Size: 172.2ft² / Bed Type: 1 Double bed
續住每晚: HK\$1170+

Twin 成人佔半房 每位 **\$4330+**
Room Size: 226ft² / Bed Type: 2 Twin bed
續住每晚: HK\$1240+

位於九州最大的天神區，所處的地理位置極佳，周邊是購物百貨集中地，如有大丸百貨及天神地下街，而中洲的鬧區也在步行圈內。酒店大堂內準備了『免費咖啡站』，客人可以在此隨意享用即磨咖啡。



Hakata Excel Hotel Tokyu

位置優越

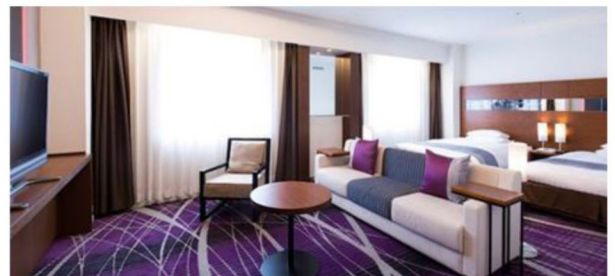
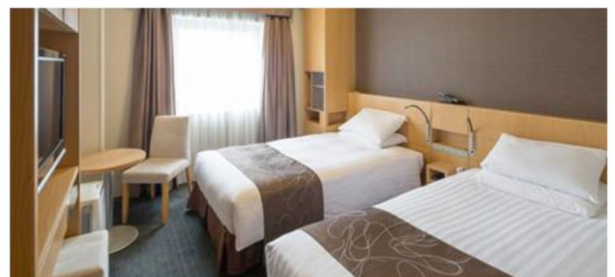
中洲川端區 www.tokyuhotelsjapan.com/global/hakata-e

交通方法: 地下鐵中洲川端站步行約1分鐘

Standard Twin / Double 成人佔半房 每位 **\$4610+**
Room Size: 199-211ft² / Bed Type: 2 Twin bed (1.1m x 1.95m) or 1 Double (2m x 1.95m)
續住每晚: HK\$1520+

Superior Twin 成人佔半房 每位 **\$5260+**
Room Size: 414-433ft² / Bed Type: 2 Twin bed (1.2m x 1.95m)
續住每晚: HK\$2120+

酒店位置非常好，交通便利，中洲川端站1號出口左轉便到達酒店，而4號出口是一蘭拉麵總店、驚安殿堂、藥妝及便利店，周邊逛街購物美食都很方便，搭乘地鐵只要一站就到天神



Hotel Okura Fukuoka

位於中洲川端站鬧中取靜

中洲川端區 www.okura-nikko.com/zh-hant/japan/fukuoka/hotel-okura-fukuoka/

交通方法: 地下鐵中洲川端6號出口直接相連

Standard Double / Twin

成人佔半房
每位

\$4860+

Room Size: 269ft² (1 Double bed) / 301ft² (2 Twin bed)
續住每晚: HK\$1780+

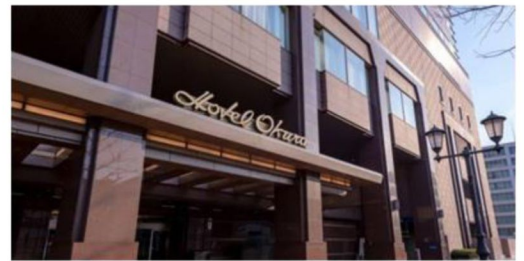
Large Twin

成人佔半房
每位

\$5310+

Room Size: 376.7ft² / Bed Type: 2 Twin bed
續住每晚: HK\$2220+

從福岡機場搭乘地鐵15分鐘車程即到，地理位置優越，交通極為便捷，鄰近天神商業區及中洲川端站，而步行5分鐘可達一蘭總本店及驚安殿堂。酒店以東京大倉飯店的經營理念以最高級的設施、最美味的佳餚、最頂級的服務為基礎，為客人營造舒適的氛圍。



Hotel Nikko Fukuoka

直通博多站地下街 購物更方便

博多 www.hotelnikko-fukuoka.com/cht

交通方法: JR 博多站步行 約3分鐘

Semi Double

成人佔半房
每位

\$4960+

Room Size: 231.4ft² / Bed Type: 1 Double Bed (1.4m x 2m)
續住每晚: HK\$1870+

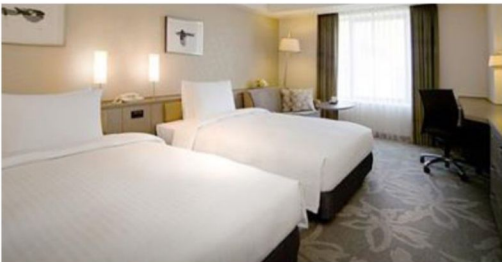
Superior Twin

成人佔半房
每位

\$5280+

Room Size: 317.5ft² / Bed Type: 2 Twin Bed (1.2m x 2m)
續住每晚: HK\$2140+

位於博多站前，與博多運河城、中洲相鄰，和JR、地鐵博多站直接連接。位於從福岡機場乘坐地鐵約5分鐘的絕佳地段



Price Inclusive of:

- Roundtrip economy class air ticket to Fukuoka
- 2 nights hotel accommodations
- 0.15% TIC Levy

Terms & Conditions:

- Prices quoted are on per person basis and subject to change without prior notice.
- All payments are non-refundable and non-transferable.
- Valid for a minimum of 2 adults travel & check-in together under same booking record for the whole journey.
- Reservations must be made at least 3 working days prior to departure.
- Minimum 2-night consecutive stay at same hotel is required
- Surcharge may be applied during peak season.
- No amendment, cancellation and refund once booking is confirmed.
- Departure taxes, Hong Kong Airport Security Charge, airlines insurance surcharge, airlines fuel surcharge, seasonal surcharge and travel agency service fee are not included in the above fares.
- These amounts will be determined upon your confirmation of booking and will be added to the final fare.
- Prices and conditions are subject to change without prior notice.