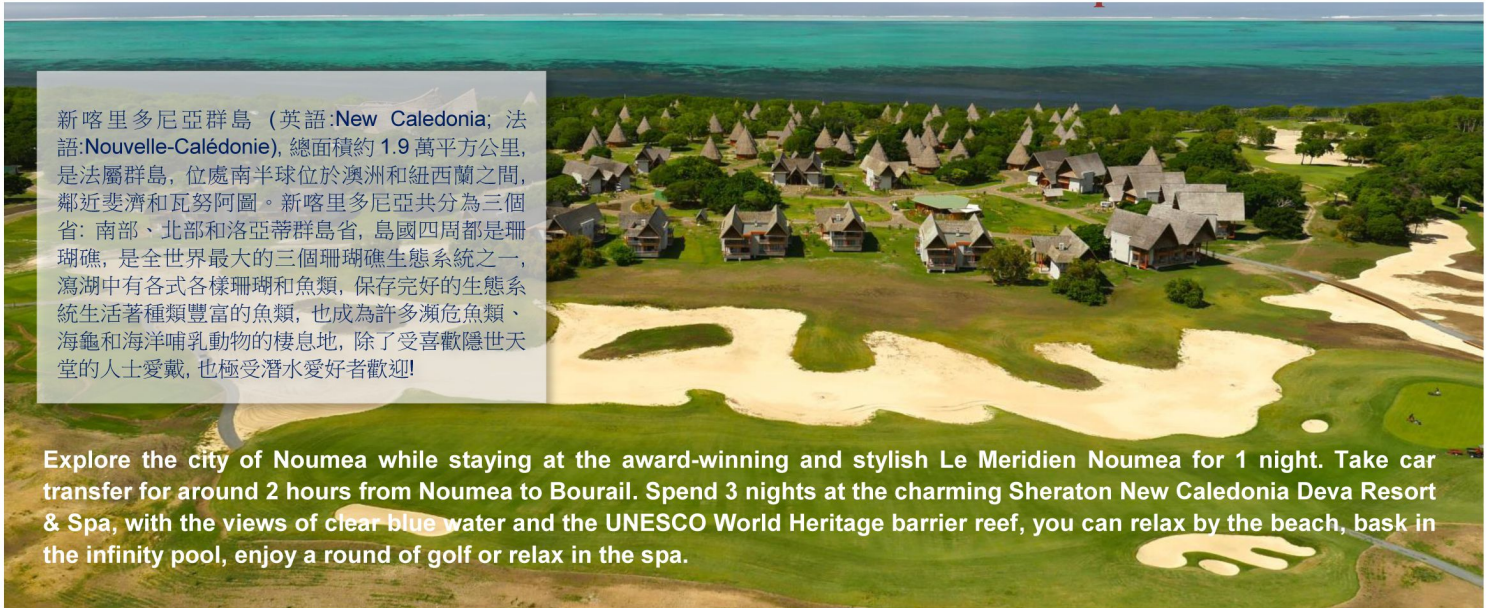


# New Caledonia · Noumea & Bourail 6 Days 4 Nights Combo 新喀里多尼亞 · Noumea & Bourail 6日4夜套票



新喀里多尼亞群島 (英語:New Caledonia; 法語:Nouvelle-Calédonie), 總面積約 1.9 萬平方公里, 是法屬群島, 位處南半球位於澳洲和紐西蘭之間, 鄰近斐濟和瓦努阿圖。新喀里多尼亞共分為三個省: 南部、北部和洛亞蒂群島省, 島國四周都是珊瑚礁, 是全世界最大的三個珊瑚礁生態系統之一, 瀉湖中有各式各樣珊瑚和魚類, 保存完好的生態系統生活著種類豐富的魚類, 也成為許多瀕危魚類、海龜和海洋哺乳動物的棲息地, 除了受喜歡隱世天堂的人士愛戴, 也極受潛水愛好者歡迎!

Explore the city of Noumea while staying at the award-winning and stylish Le Meridien Noumea for 1 night. Take car transfer for around 2 hours from Noumea to Bourail. Spend 3 nights at the charming Sheraton New Caledonia Deva Resort & Spa, with the views of clear blue water and the UNESCO World Heritage barrier reef, you can relax by the beach, bask in the infinity pool, enjoy a round of golf or relax in the spa.



Honeymoon / Wedding Anniversary  
蜜月 / 結婚週年紀念日優惠



Welcome Honeymoon amenities & 10% discount on all Deep Nature Spa treatments

\*\*Marriage certificate within 12 months is require  
\*\*Wedding anniversary within 2 months before / after the anniversary

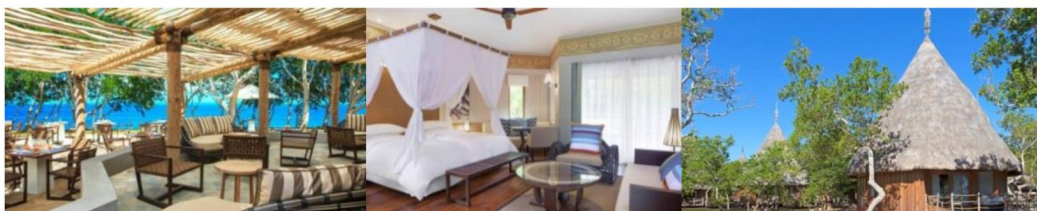
## Basic Information

Weather: 氣溫:	Average – December to March 24-30°C / April to November 17-24°C 平均 – 12 至 3 月 24-30°C / 4 至 11 月 17-24°C
Season: 氣候:	December – March Rainy 12 – 3 月 雨季
Time Difference: 時差:	3 hours ahead of Hong Kong 比香港快 3 小時
Distance from HK: 與香港相距	Approx. 7,383 km 約 7,383 公里
Flight Duration: 航班飛行時間:	Approx. 9 hours 40mins 約 9 小時 40 分鐘
Visa: 簽證:	Visa free for HKSAR passport holders (Maximum of stay: 90 Days) 持有香港特別行政區護照可免簽證 (最長可逗留期: 90 天)





## Flight Information



Date 日期	Flight 航班	From 由 / To 至	Dep 起飛 / Arr 到達
<b>HK 香港 → Noumea 努美亞 → HK 香港 via TOKYO 東京</b>			
Daily	CX524	Hong Kong 香港 / Tokyo 東京	0055 / 0630
Tue, Wed, Fri, Sat, Sun	SB801	Tokyo 東京 / Noumea 努美亞	1215 / 2250
Tue, Wed, Fri, Sat, Sun	SB800	Noumea 努美亞 / Tokyo 東京	0050 / 0750
Daily	CX501	Tokyo 東京 / Hong Kong 香港	1040 / 1440
<b>HK 香港 → Noumea 努美亞 → HK 香港 via TOKYO 東京</b>			
Daily	CX566	Hong Kong 香港 / Osaka 大阪	0150 / 0630
Mon, Thu	SB881	Osaka 大阪 / Noumea 努美亞	1130 / 2215
Mon, Thu	SB880	Noumea 努美亞 / Osaka 大阪	0010 / 0700
Daily	CX567	Osaka 大阪 / Hong Kong 香港	0915 / 1220

\*Flight schedules are subject to change without prior notice | \*Airfare surcharge may apply based on seat availability.

## Package Price

Accommodation 住宿	Room Type 房間種類	No. of nights 晚數	Price per person 每位收費
<a href="#">Le Meridien Noumea (4*)</a>	Superior Ocean View	1	<b>\$16,880+</b>
<a href="#">Sheraton Deva Spa &amp; Golf Resort (5*)</a>	Traditional Bungalow	3	

### Package Prices Include:

- \* Roundtrip economy class air ticket between Hong Kong and Tokyo (Narita Airport) or Osaka (Kansai Int'l Airport) by Cathay Pacific (CX).
- \* Roundtrip economy class air ticket between Tokyo (Narita Airport) or Osaka (Kansai International Airport) and Noumea by Aircalin (SB).
- \* Private transfer from Airport to Le Meridien Noumea.
- \* Private transfer from Le Meridien Noumea to Sheraton Deva Resort.
- \* Private transfer from Sheraton Deva Resort to Airport.
- \* 1 night accommodation at Le Meridien Noumea with breakfast.
- \* 3 nights' accommodation at Sheraton Deva Resort with breakfast.
- \* Hong Kong 0.15% T.I.C. levy.

### Remarks:

- \* All the above fare based on HKD.
- \* Booking class: **CX-S | SB-N**
- \* Valid on CX and SB Operating Flights only.
- \* Ticket validity: 30 days
- \* Stopover in Japan is permitted.
- \* Hotel rates and conditions are subject to change for non-consecutive stay.
- \* Please make sure there is at least 6 months validity for all travel documents or Visa (if applicable)
- \* No amendment, cancellation and refund are allowed once documents are issued.
- \* Prices exclude any applicable taxes & surcharges.
- \* Full pay must be received within 3 days upon confirmation. Otherwise booking will be cancelled automatically.
- \* Full payment must be collected if the reservation made within 60 days.
- \* Prices are subject to change without prior notice due to exchange rate fluctuation, fuel prices and/or unforeseen circumstances.
- \* Information and images are for reference only.

### 以上價格包括:

- \* 國泰航空來回香港至東京 (成田機場) 或大阪 (關西國際機場) 經濟客位機票。
- \* 新喀里多尼亞航空來回東京 (成田機場) 或大阪 (關西國際機場) 至努美阿經濟客位機票。
- \* 機場至 Le Meridien Noumea 專車接送。
- \* Le Meridien Noumea 至 Sheraton Deva Resort 專車接送。
- \* Sheraton Deva Resort 至機場專車接送
- \* 1晚 Le Meridien Noumea 住宿連早餐。
- \* 3晚 Sheraton Deva Resort 住宿連早餐。
- \* 0.15% 旅遊業議會印花稅。

### 備註:

- \* 以上價格全以港幣結算。
- \* 訂位代號: **CX-S | SB-N**
- \* 只適用於 CX 及 SB 營運航班。
- \* 機票有效期: 30 日。
- \* 可免費停留日本。
- \* 如只預訂房間或作不連續住宿, 酒店價目及條款或會有所調整及變動
- \* 請持有效簽證 (如適用) 及最少六個月以上有效期之護照入境。
- \* 機票及酒店套票發出後, 將不接受更改, 取消及退款。
- \* 以上價格不包括所有有關稅項及附加費。
- \* 航班或酒店作實後 3 天內須繳付全部費用, 否則自動取消。
- \* 如預定 60 天內出發之套票, 必須先收取套票全費, 方進行預定。
- \* 由於匯率波動, 燃料價格和/或不可預見的情況, 價格如有變更, 恕不另行通知。
- \* 資料及圖片僅供參考。