

# Sri Lanka Classic Tour 7 Days 5 Nights

## 斯里蘭卡 7日5夜 文化遺產 · 自然風光之旅



### Tour Highlights

- UNESCO World Heritage Sites - Sigiriya Rock Fortress, Dambulla Cave Temple & Temple of Tooth Relic
- Scenic Train Journey
- "Little England" Nuwara Eliya
- Yala National Park Safari
- Sri Lankan Tradition Stilt Fishing
- Galle World Heritage Site

### Basic Information

Weather: 氣溫:	Average 25°C 平均 25°C
Season: 氣候:	Hot and rainy throughout the year 全年氣候炎熱及多雨
Time Difference: 時差:	2.5 hours behind of Hong Kong 比香港慢 2.5 小時
Distance from HK: 與香港相距	Approx. 4,050 km 約 4,050 公里
Flight Duration: 航班飛行時間:	Approx. 7 hours 45 minutes (Exclude transit time) 約 7 小時 45 分鐘 (不包括轉機時間)

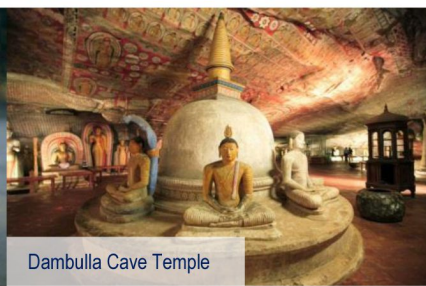


Required for HKSAR and BNO passport holder  
An Electronic Travel Authorization (ETA) must be obtained before departure  
特區護照及英國國民(海外)護照持有人均須簽證  
所有入境旅客於出發前需辦理電子簽證(ETA)

Visa:  
簽證:



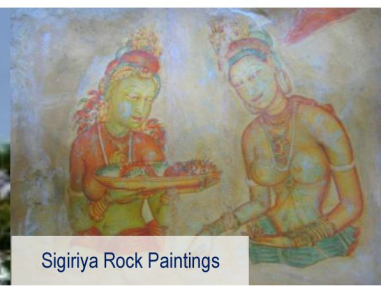
Kandy



Dambulla Cave Temple



Sigiriya Rock



Sigiriya Rock Paintings

Day 天數	Itinerary 行程	Meals 用餐		
		B	L	D
Day 1 第 1 天	<p><b>Hong Kong 香港</b> ✈️ <b>Colombo 科倫坡</b> 🚗 <b>Negombo 尼甘布 (15km, 20 mins approx.)</b></p> <p>Depart Hong Kong for Colombo via Kuala Lumpur. Upon arrival, meet &amp; transfer to Negombo hotel for check-in.</p> <p>Overnight: Your chosen hotel in Negombo</p>	-	-	-
Day 2 第 2 天	<p><b>Negombo 尼甘布</b> 🚗 <b>Sigiriya 錫吉里亞 (172km, 4.5 hrs. approx.)</b></p> <p>Breakfast at hotel. Proceed to Sigiriya with lunch. Later proceed to climb the <b>Sigiriya Rock Fortress</b> is home to the 5th Century "Fortress in the Sky" which is perhaps the most fantastic single wonder of the Island. It is also known as Lion Rock because of the huge lion that used to stand at the entrance to the fortress. Within its triple- moated defence the huge rock rises almost to a sheer height of 500ft. On its summit are the foundations of what was once a great and sumptuous palace and gardens complete with swimming pool. On one of the stairways the only known ancient work of Sinhala secular painting survived in the form of Frescoes of life sized damsels in all the freshness and delicacy of their original color.</p> <p>Dinner &amp; Overnight: Your chosen hotel in Sigiriya / Dambulla</p>	✓	✓	✓
Day 3 第 3 天	<p><b>Sigiriya 錫吉里亞</b> 🚗 <b>Dambulla 丹布拉 (17km, 30 mins approx.)</b> 🚗 <b>Kandy 康提 (90km, 2.5 hrs. approx.)</b></p> <p>Visit <b>Dambulla Cave Temple</b>, the cave temple consists of a complex of Buddhist image houses. Its rock ceiling is one large sweep of colorful frescoes, some of which dates back to over 2,000 years, which depicts Buddhist mythology, and the tales of the Buddha's previous births. This cave temple has the largest number of Buddha statues all housed in one place, including a 14 meter long, colossal figure of the recumbent Buddha carved out of the rock. Continue to Kandy, en route visiting a <b>Spice Garden</b> in Matale to see the different spices, which Sri Lanka is famous for.</p> <p>Kandy, the hill capital, venue of the annual Perahera The last stronghold of the Sinhala Kings was finally ceded to the British in 1815. Visit <b>Temple of the Sacred Tooth Relic</b> - ever since 4th Century A.D, when the Buddha's Tooth was brought to Sri Lanka hidden from sacrilegious hands in an Orissan princess' hair, the Relic has grown in repute and holiness in Sri Lanka and throughout the Buddhist world. It is considered Sri Lanka's most prized possession. Cultural Show featuring various dance groups.</p> <p>Dinner &amp; Overnight: Your Chosen Hotel in Kandy</p>	✓	✓	✓
Day 4 第 4 天	<p><b>Kandy 康提</b> 🚗 <b>Nuwara Eliya 努瓦勒埃利耶 (77km, 2.5 hrs. approx.)</b> 🚗 <b>Ella 埃勒 (60km, 2 hrs. approx.)</b></p> <p><b>Scenic Train Journey:</b> The very first steam trains were running in Sri Lanka to bring Tea, the greatest commercial export of the colonial Ceylon, to Colombo. Major Thomas Skinner was instrumental in setting trains up and he describes in his book "Fifty years in Ceylon" how he had to convince the British colonial government to spend approximately GBP 800,000/- to set up the network of railway lines, bridges/aqueducts, for Trains, today it stands as one of the most scenic journeys to be done on rail in the world. Continue to Nuwara Eliya, Lunch at a Restaurant.</p> <p>Sightseeing in <b>Nuwara Eliya</b>, The 'Little England' of Sri Lanka, is set against beautiful backdrops of Mountains, Valleys, Waterfalls and Tea Plantations. It is supposed to be one of the coolest places in the Island; all around Nuwara Eliya you will see evidence of the British influence, houses like country cottages or Queen Ann style mansions.</p> <p>Continue to <b>Ella</b>, en-route visit "<b>Tea experience</b>", which involves a visit a plantation to observe firsthand the process, starting from the plucking field where it all begins with the picking of "two leaves and a bud" to the factory where the processing begins</p> <p>Dinner &amp; Overnight: Your Chosen Hotel in Ella</p>	✓	✓	✓



Scenic Train Journey

Ella Nine Arch Bridge

Tea experience

Nuwara Eliya

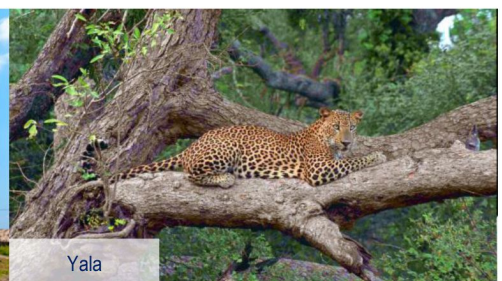
Day 天數	Itinerary 行程	Meals 用餐		
		B	L	D
Day 第 5 天	<p><b>Ella 埃勒 🚗 Yala 雅拉國家公園 (90km, 2 hrs. approx.)</b></p> <p>Proceed to the wilderness of <b>Yala</b>, situated in the south east corner of the island, is home to the greatest variety of Sri Lanka's wildlife. Its varying habitats, consisting of scrub plains, jungles, rocky outcrops, fresh water lakes, rivers and beaches, provides home to many species of animals including sloth bear, herds of elephants, buffalo, monkeys, sambar, deer, crocodiles and the endangered leopard subspecies, Panthera Pardus Kotiya, which is only found in Sri Lanka.</p> <p>Check-in Hotel for lunch.</p> <p>Afternoon Jeep Safari at <b>Yala National Park</b> with a total protected area of 126,768 hectares, Yala consists of scrub plains, lagoons and rocky sections and offers the broadest cross-section of the country's flora and fauna. In terms of game-viewing this is probably the best place to see all of the 'big three': elephant, leopard and water buffalo. It is estimated that Yala is home to about 35 Leopard making it one of the world's densest leopard populations. Countless other animals including sloth bear, deer, wild boar, crocodiles, monkeys and numerous species of birds can also be seen.</p> <p>Dinner &amp; Overnight: Your Chosen Hotel in Yala</p>	✓	✓	✓
Day 第 6 天	<p><b>Yala 雅拉 🚗 Galle 迦勒 (170km, 3 hours approx.) 🚗 Colombo 科倫坡 (120km, 2.5 hours approx.)</b></p> <p>Proceed to the Worlds only living World Heritage Site, <b>Galle</b>, en-route visit <b>Stilt Fisherman</b>. Thereafter walking city tour of *Galle Fort, a UNESCO World Heritage Site, originally built by the Portuguese and then further developed by the Dutch and the British, covers nearly four sq. kms, and is protected by 12 bastions and connecting ramparts. During the early 18th century the Old Dutch Gate was the entrance point to the Fort. Subsequently the British built the Main Gate which is still used today. Buildings of interest include the Dutch Reformed Church, All Saints Church, Amangalla Hotel (formerly the New Oriental Hotel), and the lighthouse and bell tower.</p> <p>Continue to <b>Colombo</b>, city tour of Colombo a drive through the city taking you to the busy commercial areas as well as the tree lined residential, Cinnamon Gardens, Visit Fort, the former British administrative centre and military garrison, Sea Street - the Goldsmiths quarters in the heart of Pettah, the Bazaar area, where is also a Hindu Temple with elaborate stone carvings, and the Dutch Church of Wolfedhal dating back to 1749. Also visit the BMICH, see the replica of Avukana Buddha &amp; the Independence Square.</p> <p>Start shopping in Colombo, Visit ODEL, House of Fashion, Arcade Independence square, Race Course, and Beverly Street, visit bargain market in Colombo Pettah.</p> <p>Transfer to the Airport for your flight back.</p>	✓	✓	✓
Day 7 第 7 天	<p><b>Colombo 科倫坡 ✈️ Hong Kong 香港</b></p> <p>Fly back to Hong Kong via Kuala Lumpur.</p>	-	-	-



Stilt Fishing



Galle Fort



Yala

## Flight Information

Frequency 班次	Flight 航班	From 由 / To 至	Dep 起飛 / Arr 到達
Daily	SQ863	Hong Kong 香港 / Singapore 新加坡	1425 / 1820
	SQ468	Singapore 新加坡 / Colombo 可倫坡	2220 / 2335
	SQ469	Colombo 可倫坡 / Singapore 新加坡	0050 / 0720
	SQ860	Singapore 新加坡 / Hong Kong 香港	0840 / 1240

\*Flight schedules are subject to change without prior notice. | \*Airfare surcharge may apply during high season.

## Package Price

	Accommodation 住宿	Location 地點	No. of Nights 入住晚數	Price Per Person 每位收費	
				4-6 Pax 4-6 位	Single Supplement 單人房附加費
Standard	<a href="#">Beacon Hotel</a> or similar class	Negombo	1	\$6,680+	\$1,200+
	<a href="#">Fresco Water Villa</a> or similar class	Sigiriya	1		
	<a href="#">Oak-Ray Heritage</a> or similar class	Kandy	1		
	<a href="#">Oak-Ray Ella</a> or similar class	Ella	1		
	<a href="#">Oak-Ray Lake</a> or similar class	Yala	1		
Superior	<a href="#">Jetwing Sea</a> or similar class	Negombo	1	\$6,980+	\$1,580+
	<a href="#">Amaya Lake</a> or similar class	Dambulla	1		
	<a href="#">Amaya Hills</a> or similar class	Kandy	1		
	<a href="#">Oak-Ray Ella</a> or similar class	Ella	1		
	<a href="#">Chaarya Hotel</a> or similar class	Yala	1		
Deluxe	<a href="#">Jetwing Blue</a> or similar class	Negombo	1	\$7,680+	\$1,880+
	<a href="#">Jetwing Lake</a> or similar class	Dambulla	1		
	<a href="#">Earls Regency</a> or similar class	Kandy	1		
	<a href="#">Jetwing Kaduruketha</a> or similar class	Ella	1		
	<a href="#">Cinnamon Wild</a> or similar class	Yala	1		

### Package Prices Include:

- \* Roundtrip economy class air ticket between HK and Colombo via Singapore by Singapore Airlines.
- \* 5 nights' accommodation with daily breakfast and dinner.
- \* Lunch as per itinerary.
- \* All transportation as per the itinerary
- \* Private tour with English speaking guide.
- \* Entrance fees as per itinerary.
- \* 1 games drive in Yala.
- \* Hong Kong 0.15% T.I.C. levy

### 以上價格包括：

- \* 新加坡航空經由新加坡來回香港至可倫坡經濟客位機票。
- \* 5 晚酒店住宿連早及晚餐。
- \* 行程內午餐。
- \* 行程內所有接送服務。
- \* 私人導賞遊連英語導遊。
- \* 行程所列景點入場費。
- \* 雅拉國家公園 1 次乘車觀賞野生動物。
- \* 0.15% 旅遊業議會印花稅。

### Remarks:

- \* All the above fare base on HKD
- \* Booking class: V class
- \* Valid on SQ Operating Flights only
- \* Price quoted does not include Tour Escort from Hong Kong
- \* Prices exclude any applicable taxes, surcharges, visa fees & tips for local guide and driver, approx. USD10-15 per person per day.
- \* Hotel rates and conditions are subject to change for non-consecutive stay
- \* Please make sure there are at least 6 months validity for all travel documents or Visa
- \* No amendment, cancellation and refund is allowed once documents are issued
- \* Full pay must be received within 3 days upon confirmation. Otherwise booking will be cancelled automatically
- \* Full payment must be collected if the reservation made within 1 month
- \* The sequence of the tour, hotel accommodations and sites arrangement may be amended due to circumstances
- \* Prices are subject to change without prior notice due to exchange rate fluctuation, fuel prices and/or unforeseen circumstances.
- \* Information and images are for reference only

### 備註：

- \* 以上價格全以港幣結算
- \* 訂位代號: V class
- \* 只適用於新加坡航空 SQ 營運航班
- \* 不包括香港領隊
- \* 以上價格不包括所有機場稅, 附加費, 簽證費及司機導遊小費每人每約 USD10-15.
- \* 如只預訂房間或作不連續住宿, 酒店價目及條款或會有所調整及變動
- \* 請持有效簽證及最少六個月以上有效期之護照入境
- \* 機票及酒店套票發出後, 將不接受更改, 取消及退款
- \* 航班或酒店作實後 3 天內須繳付全部費用, 否則自動取消
- \* 如預定 1 個月內出發之套票, 必須先收取套票全費, 方進行預定
- \* 行程次序安排、酒店住宿及景點安排或會依據當地情況作更改
- \* 由於匯率波動, 燃料價格和/或不可預見的情況, 價格如有變更, 恕不另行通知。
- \* 資料及圖片僅供參考。